

## Celebrity Voices – Instructions for installation.

**These voices have been formatted only for TomTom® devices and these instructions will commonly refer to all TomTom® devices. However, please note we cannot take responsibility for any damage – this modification is at your own risk!**

You will need to be able to connect your TomTom® device to a computer, using the TomTom® USB cable. (Alternatively, if your TomTom® has a removable SD card, you can remove this and insert it in a suitable card reader connected to your computer.) The computer must have a CD ROM installed (CD ROM Version only). Please ensure your TomTom® or SD card has sufficient free memory to install the new voice files, you will need approx 4.3Mb of free space.

Installing these voices is not technically difficult however, we strongly advise you to make a full backup of your SD card (Classic, 300, 500, ONE or Rider) or the device's internal memory (700, 910, ONE or any other variation thereof) before you make any changes to the software. When you are making any changes please make sure that **all** actions you are undertaking (copying the files, upgrading the application, installing the maps) are complete before disconnecting or switching off the sat nav, or removing your SD card. Failure to do so may corrupt the data on the SD card or the hard drive.

Each of the voices contained on the CD/in the Download consists of three files:

dataXX.chk - the voice file  
dataXX.vif - the voice description file  
dataXX.bmp - the voice picture file

where XX is the voice number, for instance data81.chk, which is the "Sally Traffic" voice.

Steps 1 and 2 will differ depending on whether you ordered a CD ROM or opted for the download. Please follow the appropriate instructions below.

### **CD ROM Version**

The voices are stored on the CD in a folder called Celebrity Voices. You will need to copy all of the 12 files from the CD folder to the directory or folder where the voice files are kept on your TomTom®.

Step 1. Insert the CD into your CD drive.

Step 2. Click the Windows Start logo at the bottom left of your screen, then click on "My Computer" and open the CD Drive to display the contents of the CD. Double click the Celebrity Voices folder. You should now see the 12 files associated with the voices to install on your sat nav.

## **Download Version**

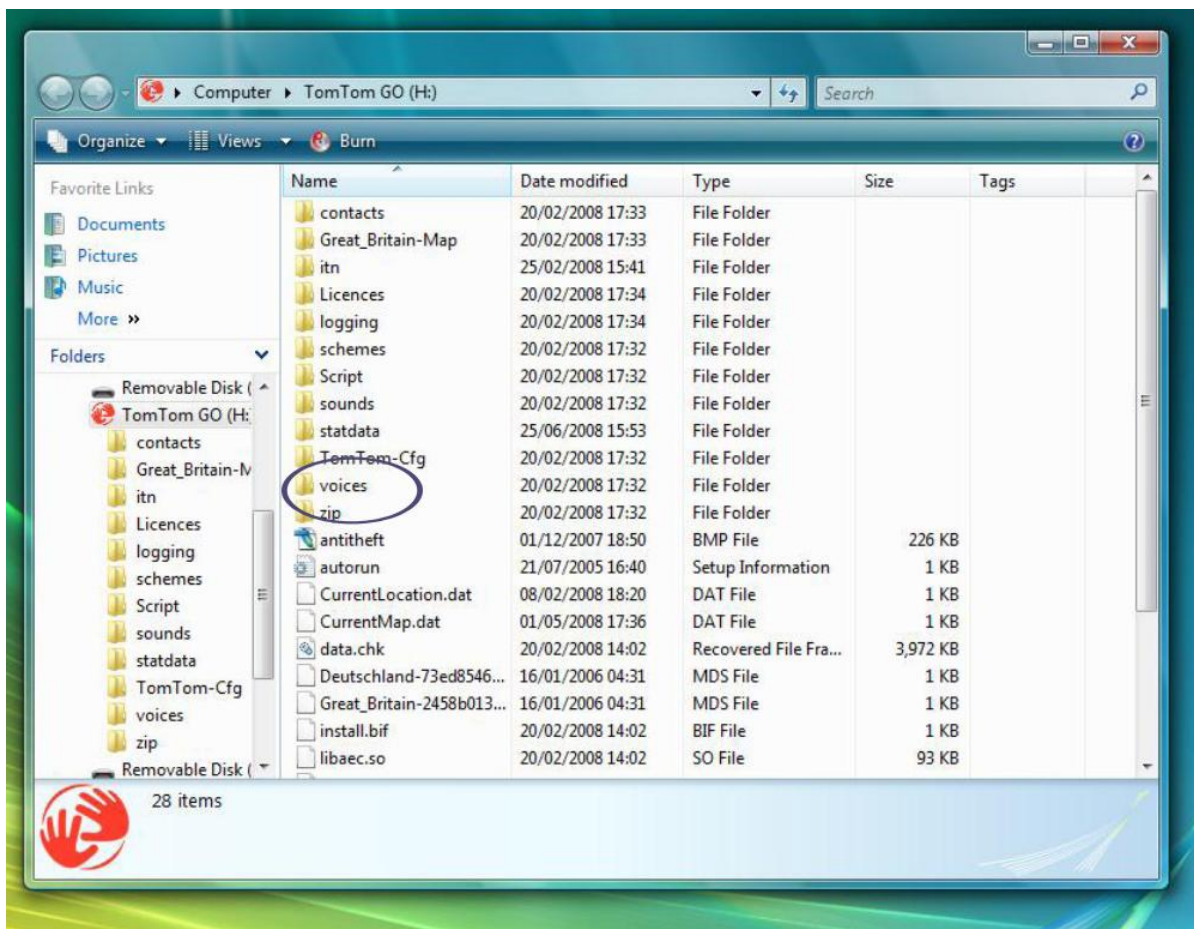
Step 1. Create a folder on your desktop, or other preferred directory, and name it “Celebrity Voices”.

Step 2. Extract the files from the compressed folder to the “Celebrity Voices” folder on your computer. Open the “Celebrity Voices” folder and you should now see the 12 files associated with the voices to install on your sat nav.

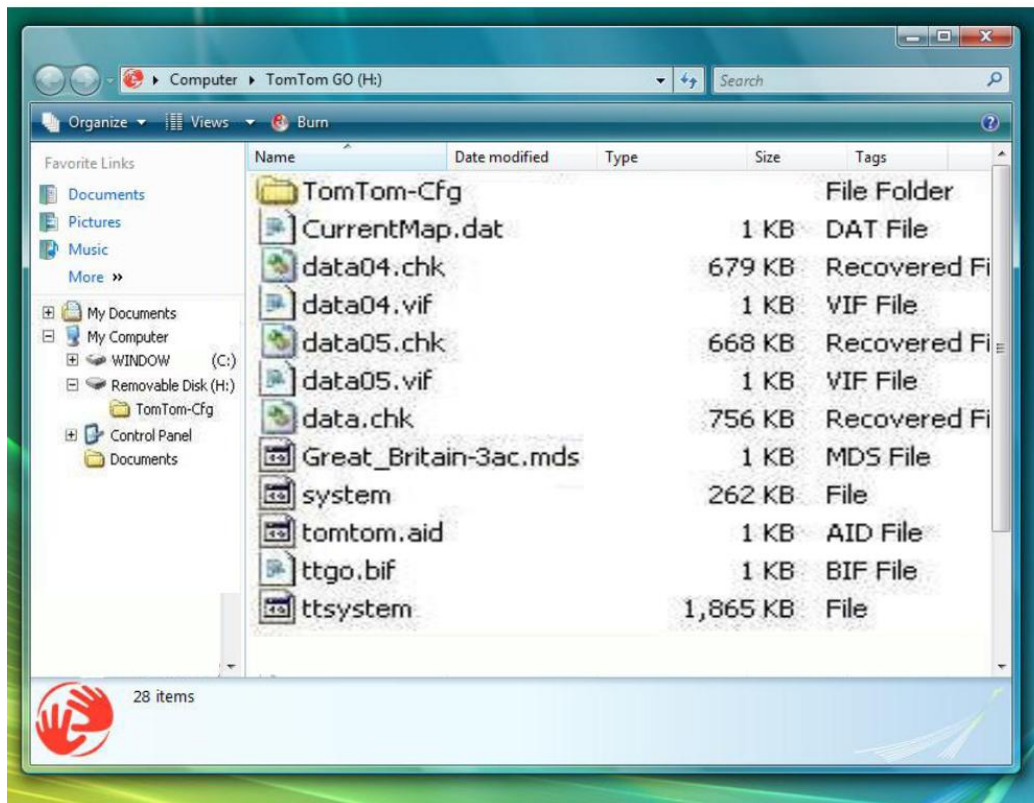
## **All Versions**

Step 3. Connect your TomTom® to your computer via the USB port, or insert the removable SD Card into the Card Reader, according to your TomTom® manual.

Step 4. Locate the directory where the voice files are held. This will normally be in the “Voices” folder, as shown below.



On some units the files may be stored on the main directory which is displayed when you connect your TomTom® as shown below.



Step 5. Copy the 12 files from the Celebrity Voices folder on the CD or your desktop and paste into the Voices folder, or main folder, on your sat nav. Wait until all the files have been copied before disconnecting the sat nav from the computer. When you are satisfied that all actions have been complete, switch off your sat nav and disconnect it from your computer.

You can now switch the unit on again (it will go through the loading), tap the screen, then tap Change preferences > Change voice and use left and right arrows to select the newly installed voice(s). Check the Instruction Manual for your unit if you are unsure how to change the voice.

Now, make your choice of one of the celebrities and either have Sir Terry “Steer” you on the right course, or Alan “Deadly” Dedicoat “Direct” you to your destination. If you fancy the softer woman’s approach, why not get Lynn Bowles to “Line” up your route or maybe Sally Traffic can “Safely” navigate you around the country.

Happy and safe motoring!

TomTom® and the red hands Logo are trademarks of TomTom International B.V.

## FREQUENTLY ASKED QUESTIONS

### Q1 Will installing these voices damage my TomTom?

A If you follow the instructions there should be no problems with the performance of your unit. We strongly recommend that you back up the data from your unit onto your computer before you start the installation of these files. If you accidentally erase any information, or overwrite important files, you will be able to restore the system from your back up data.

### Q2 Nothing happens when I insert the CD (where these have been purchased on CD) into my computer, what can I do?

A Click on the Windows Start Icon on the bottom left hand corner of the screen and search for, and open the CD Directory manually, you should now be able to view the files on the CD.

### Q3 How do I extract the files from the Download ZIP File?

A Do one of the following:

- To extract a single file or folder, double-click the compressed folder to open it.
- To extract the entire contents of the compressed folder, right-click the folder, click Extract All, and then follow the on screen instructions.
- Check the “Help” Section of your computer Operating System for other instructions.

### Q4 Can I put the files on my TomTom if I do not have the USB connection lead?

A This will only be possible for models with a removable SD Card. Make sure that the SD Card has sufficient memory to copy the voice files to. You will need approximately 4.3Mb of free space. If you do not have sufficient space on your current card, you can buy a larger card, copy all of the files on your current SD card into a folder on your computer and then copy them onto the new SD Card, Then you will be able to load the new voices as well.

You can purchase a replacement USB lead from the official TomTom site and other accessory sites.

### Q5 Will these voices work on any other Satellite Navigation Systems?

A No, they are only suitable for use on the TomTom range.

### Q6 Are these voices voiced by an impressionist?

A No these are genuine recordings by the celebrities themselves.